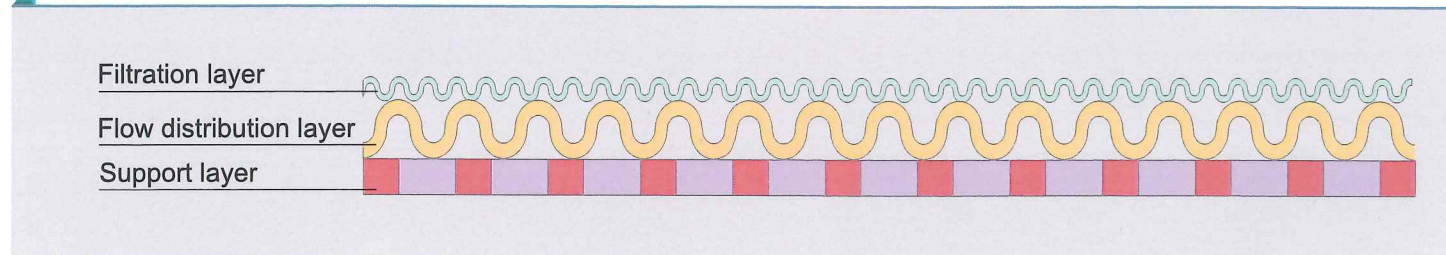


“BONMESH” is customer-made of sintered wire mesh. It can consist any wire mesh, perforated plate, and stainless plate, therefore, it can change their strength or accuracy as you need. We offer the appropriate mesh type and construction depending on your application and use condition.

Mesh Construction



Advantages

Good Permeability

The permeability or flow rate is very good in comparison of our standard sintered wire mesh panels, Poremet, because the mesh construction is 1 or 2 layer of plain mesh and perforated plate in most cases.

Tough and Durable

We know there are some companies are still using strainers which consist of perforated plate and simple mesh which are spot welded or just rolled. However, in this case the mesh has flapping or vibration due to water/air flow and the mesh will be broken relatively soon.

On other hand our Bonmesh made from plain mesh and perforated plate is very tough and durable because there is no long span mesh area and the mesh vibration is very limited.

Easy Cleaning

Cleaning is the thing regularly you do, and it is very important especially for food and beverage industry.

Our Bonmesh products are tough enough to such routine cleaning and it is relatively easy comparing our Poremet products.

Mesh Construction

Type	Mesh construction(reference)	Aperture size
BM500	100 + 500 + 100 + 20 + Perforated metal	25 μm
BM400	100 + 400 + 100 + 20 + Perforated metal	34 μm
BM350	100 + 350 + 80 + 20 + Perforated metal	43 μm
BM300	100 + 300 + 80 + 20 + Perforated metal	45 μm
BM250	100 + 250 + 80 + 20 + Perforated metal	62 μm
BM200	100 + 200 + 80 + 20 + Perforated metal	77 μm
BM150	100 + 150 + 80 + 20 + Perforated metal	109 μm
BM100	100 + 20 + Perforated metal	152 μm
BM80	80 + 20 + Perforated metal	250 μm
BM60	60 + 20 + Perforated metal	250 μm
BM40	40 + 20 + Perforated metal	410 μm
BM30	30 + 20 + Perforated metal	560 μm
BM20	20 + 12 + Perforated metal	870 μm

* Other options are available. Please contact us.

Specification

Material

Standard material: SUS316L (SUS316) for wire mesh, SUS304 for perforated plate.

Special material: Hastelloy®, Alloy20, SUS904L, Inconel®

Processing

Bending, welding, machining, electrolytic polishing.

Size of panels

Depending on customer's requirements, but maximum size is 1,200×1,200mm.

Cleaning method

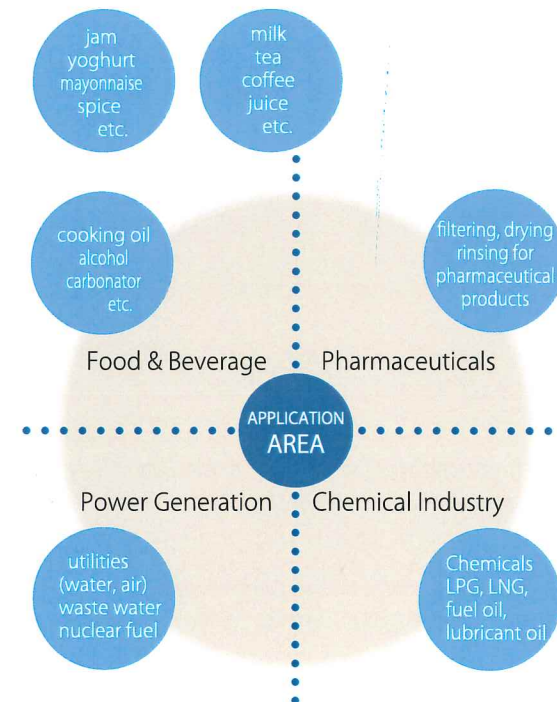
BONMESH ensures reusability and longer life by vapor washing, acid pickling, on-stream backwashing, ultrasonic or high pressure jet water cleaning, furnace heat treating etc.

Special orders

It is available to sinter various meshes without perforated plates. In case you need the strong mesh panel, we recommend to apply 16 and/or 20 mesh as support layer.

* Hastelloy® is a registered trademark of Haynes International, Inc.
* Inconel® is a registered trademark of Special Metals Corporation.

Application



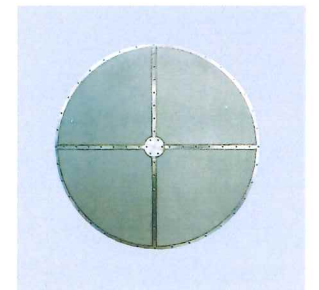
Sanitary Filter & Small Housing



Special Type of Pleated Filter



Basket Filter for Centrifuge



Disk Filter for Pharmaceuticals



Bridge Breaker



Basket Filter for Synthetic Rubber Plant

Example of Use

